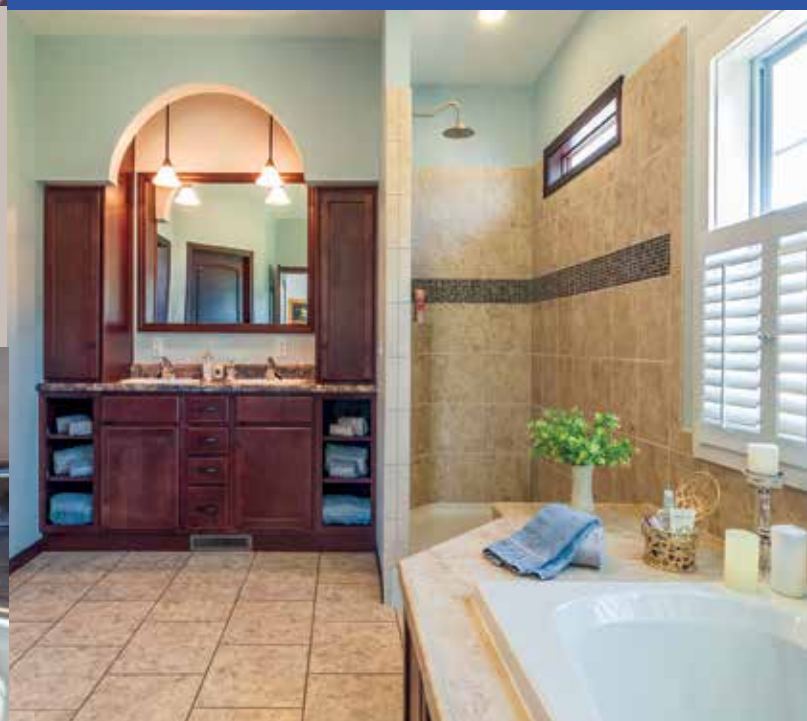




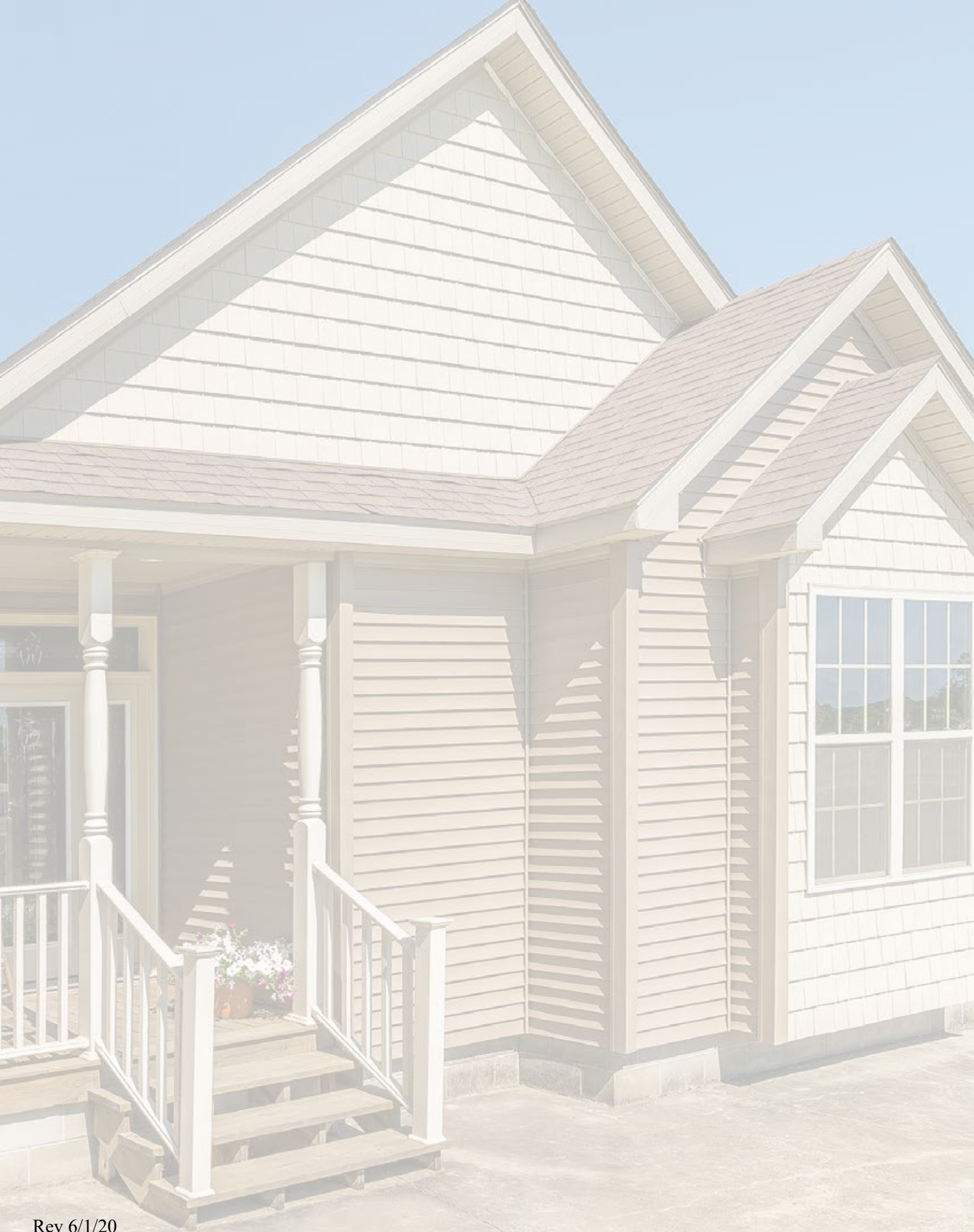
For the things
that make your house
...your Home.



Consumer Product Guide

WWW.ROCHESTERHOMESINC.COM

P.O. BOX 587 | ROCHESTER, INDIANA 46975



ROCHESTER — H O M E S — **Consumer Product Guide**

This book is designed to give you a better view of the options that are available for your new home. Please feel free to visit our website, www.rochesterhomesinc.com for more information.

INDEX

Structural Additions	1
Fireplace Options	5
Window Options	6
Structural Options	7
Plumbing Options	9
Electric Options	17
Exterior Trim	19
Exterior Doors	21
Siding & Shingles	25
Cabinet Options	27
Specialty Cabinets and Hoods	30
Countertop Options	37
Desks & Islands	39
Interior Doors & Trim	43
Flooring Options	45
Interior Finishes	48
Appliance Options	50



WWW.ROCHESTERHOMESINC.COM

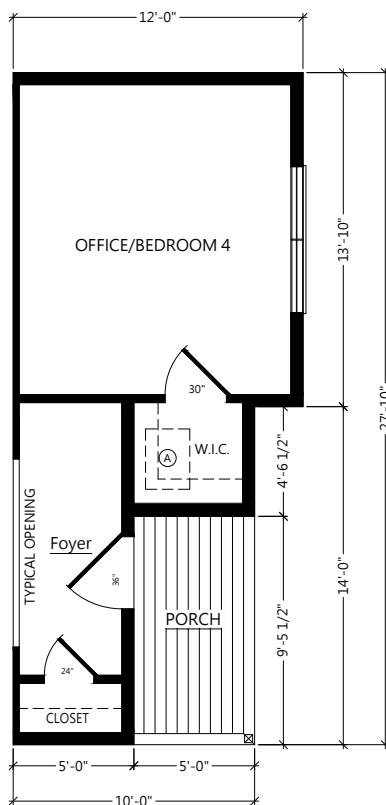
P.O. BOX 587 | ROCHESTER, INDIANA 46975



THIRD BOX CONFIGURATIONS

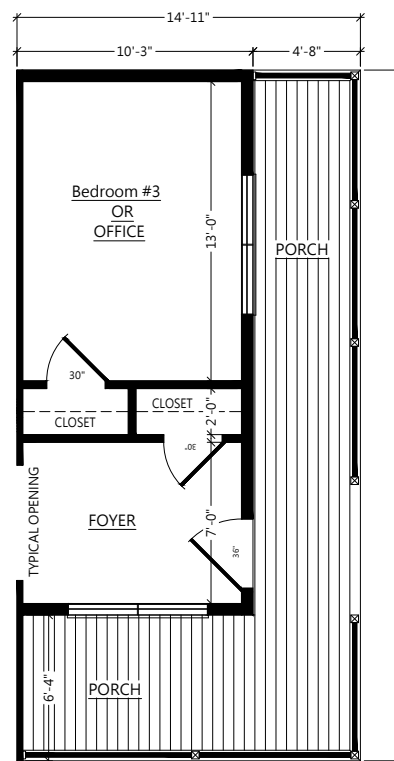
Add one of our third box configurations to any home for more space and a great look.

PORCH UNIT A



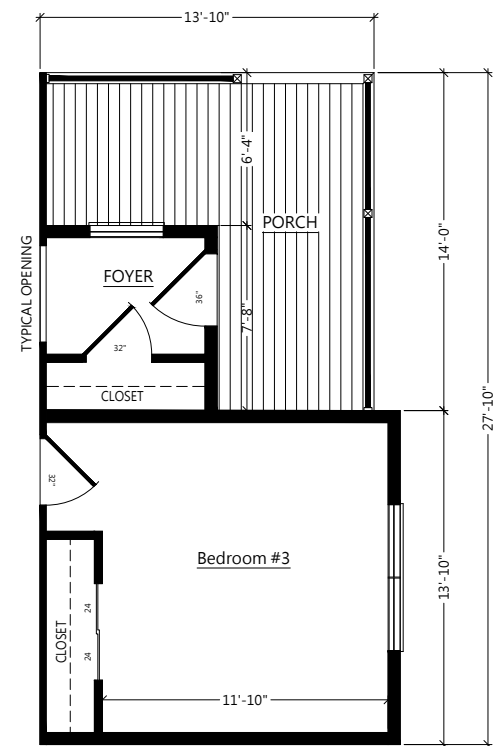
Porch Unit A • 0P839

PORCH UNIT B



Porch Unit B • 0P8391

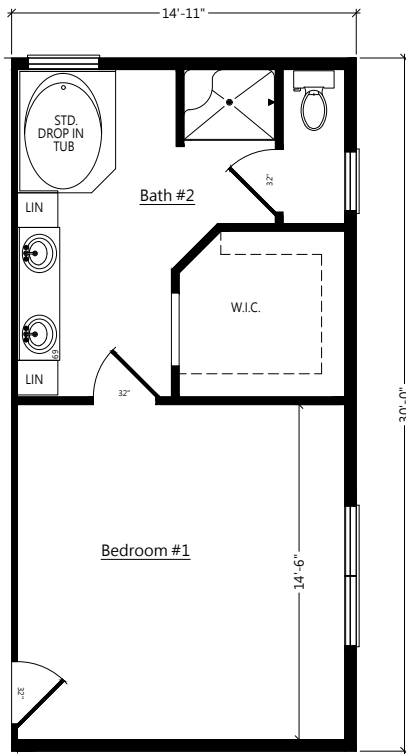
PORCH UNIT C



Porch C • 0P8392

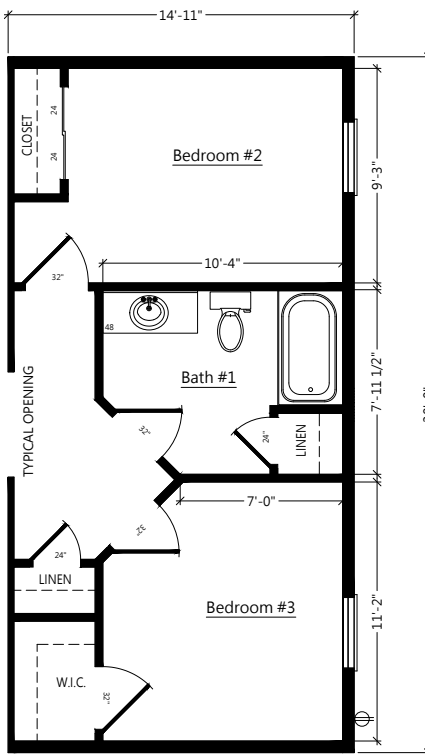
THIRD BOX CONFIGURATIONS

BED BATH UNIT A



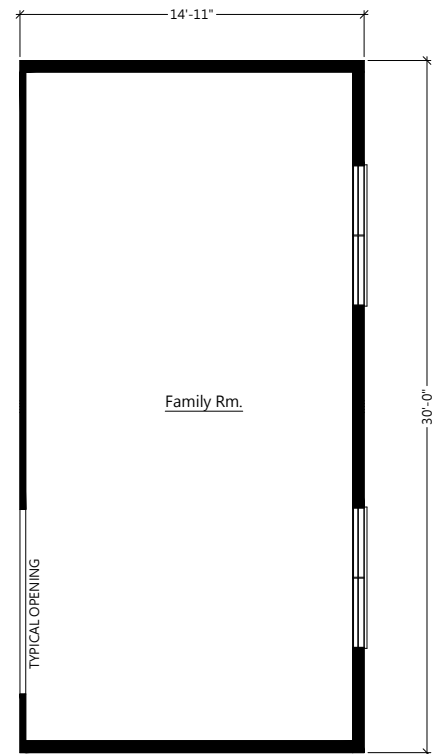
Bed Bath Unit A • 0P840

BED BATH UNIT B



Bed Bath Unit B • 0P8401

FAMILY ROOM



Family-26ft • 0P841

Family-28ft • 0P843

Family-30ft • 0P844



STRUCTURAL ADDITIONS

Dutch Gable & Bump Out

Available on 6/12 or 9/12 Ranch or Two Story

Left: Roof Return Bumpout with 8' Sidewall, Roof Return, (2) 3050 operable windows, and shutters **OP103 • AOP568**

Right: No Roof Return Bumpout Shown with 8' Sidewalls, (2) 3050 Operable Windows, and Shutters **OP107 • AOP567**



Bump Out Available on 6/12 or 9/12 Ranch or Two Story

Left: Roof Return Bumpout Shown with 8' Side wall, Roof Return, (2) 3050 Operable Windows, Shutters

• Ranch-**OP95** • Two-Story-**OP99 • AOP570**

Right: No Roof Return Bumpout Shown with 8' Side Wall, (2) 3050 operable Windows, and Shutters

• Ranch-**OP99 • AOP569** • Two-Story-**OP101**

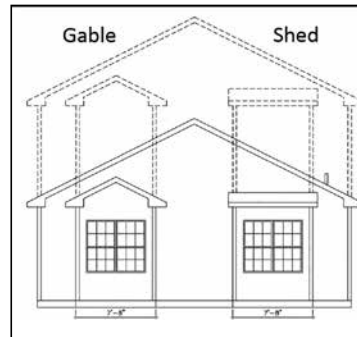
Gable & Bumpout

Available on 6/12 or 9/12 Ranch or Two Story

Left: 10" Gable (left), 10" Shed (right) Shown with 3050 windows, shutters not available

• Ranch Gable-**OP110 • AOP564** • TS Gable-**OP111**

• Ranch Shed-**OP112 • AOP27** • TS Shed-**OP113**



Gable & Bumpout Two Story

Available on 6/12 or 9/12 Two Story

Left: Square Window Bumpout with (2) 3050 Windows and Shutters (Shutters not shown) • **OP96**

Right: Round window Bumpout Shown with 6030 Fixed and 72" 1/2 Round Window • **OP97**



6' 1" Dormers Available 9/12 or 12/12

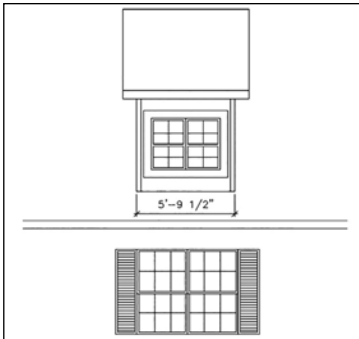
Left: 6' 1" Gable Dormer with 3046 operable window • **OP85**

Right: 6' 1" Gable Dormer with 3046 operable window and 36" 1/2 Round window • **OP88**

11' Dormers Available 12/12

Left: 11' Wide Gable Dormer with (2) 3050 Fixed or Operable Windows • **OP989**

Right: 11' Wide Gable Dormer Shown with (2) 3050 Fixed or Operable Windows and 1/2 Round Window • **OP984**



Shed Dormers Available 30 Wide 9/12 or 12/12

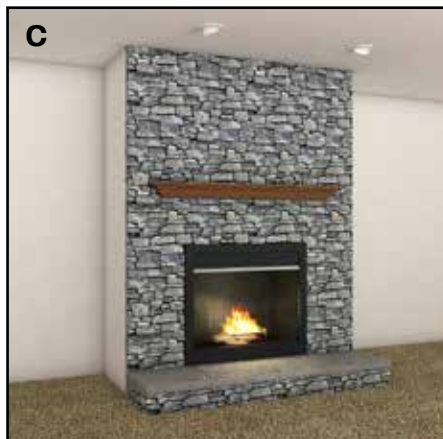
Left: 6' 1" with (2) 2030 Operable windows • **OP832**

Right: 11' Wide with (4) 2030 Fixed or Operable Windows • **OP985**

8' Covered Porch • Available Ranch only OP8 • AOP543

Full width porches or half width available.
Porches can only be built on gable ends.





FIREPLACE OPTIONS

Fireplaces A and C

Left: Fireplace A Stone front corner fireplace. Shown with Charleston Stone and Traditional Mantle.
Ranch Gas • **OP70** Wood • **OP68** Gas • **AOP595**
Cape Gas • **OP71** Wood • **OP69** Wood • **AOP596**

Right: Fireplace C Stone Front Flat Fireplace Hampton Gray and Traditional Mantle shown.

**Media prep and outlet not included.*
Ranch Gas • **OP920** Wood • **OP922** Gas • **AOP599**
Cape Gas • **OP919** Wood • **OP921** Wood • **AOP600**



Fireplaces E and H

Left: Fireplace E Optional Stone Front Half Wall Fireplace. Shown with Graphite Stone, Traditional Mantle.

**Media prep and outlet not included.*
Ranch Gas • **OP924** Wood • **OP926** Gas • **AOP601**
Cape Gas • **OP923** Wood • **OP925** Wood • **AOP602**

Right: Fireplace H Includes: Buck Creek Stone Front Fireplace (wood burning or gas), Farmhouse Mantle

Ranch Gas • **OP9265** Wood • **OP9267**
Cape Gas • **OP9266** Wood • **OP9268**



Fireplaces F and G

Left: Fireplace F Rave Fireplace. Includes: Modern Fireplace with Black Trim (Gas only)

Ranch Gas • **OP8141, AOP5951**
Cape Gas • **OP9151, AOP5961**

Right: Fireplace G Farmhouse Fireplace. Includes: Buck Creek Stone Front Fireplace (wood burning or gas), Shelving with raised hearth and mantel, windows, media prep, (4) can lights and (2) eyeball lights. Total length: 17'4"

Ranch Gas • **OP9262** Wood • **OP9261**
Cape Gas • **OP9264** Wood • **OP9263**

Traditional Mantle



Farmhouse Mantle • OP76



Wrap around mantle, stain matches trim package
60 in. Beam Mantles • OP75



Farmstead*



Weathered*

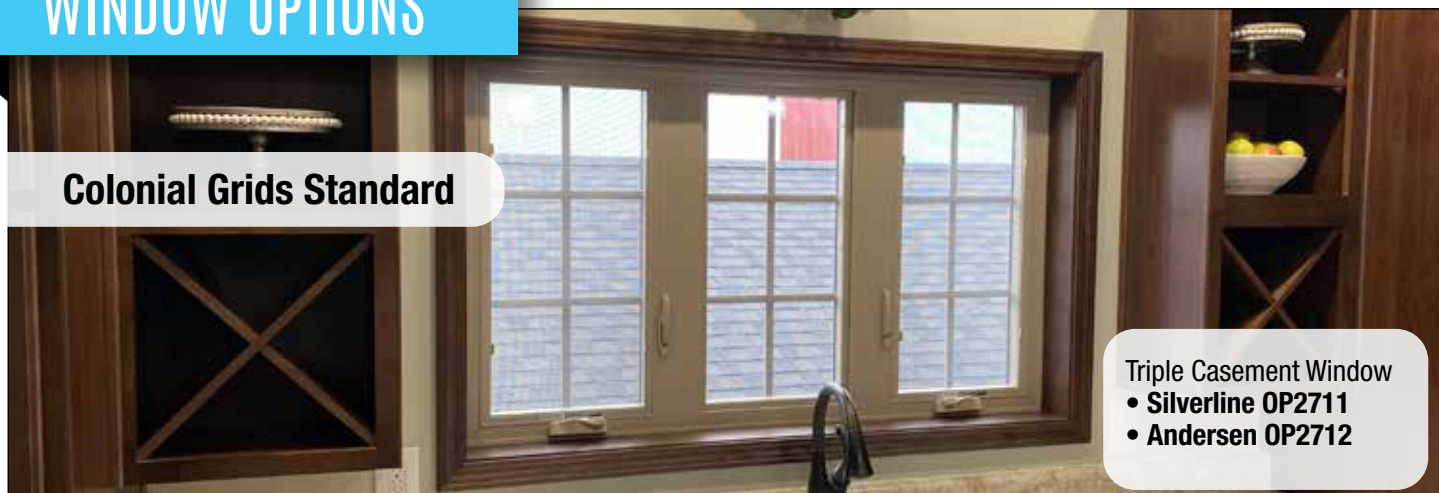
*Mantles are constructed out of Maple



All Selections Available in Wood Burning, or Natural Gas Log with Wall Switch. All Flue Assemblies Shipped Loose and Installed by Other Than RHI. All standard with 2 eyeball lights and blowers, raised hearth and mantel. Mantel will be stained to match trim package. Colors may vary from pictures shown here.

WINDOW OPTIONS

Colonial Grids Standard



Vinyl Windows

Available in white or beige with matching vinyl interior

- Low Maintenance Vinyl Interior and Exterior
- Standard with Screens & Grids
- Low-E2 Argon Glass
- Casement Window in Kitchen
- 6' 0" Also available with 9' Sidewall Option
- Available in Double Hung
- Some Transoms & Half Rounds also available
- Passive Solar Glazing
- Limited Lifetime Warranty*



White



Sandtone

Available from SilverLine

Vinyl WDO 3050 • OP257 • AOP138

Vinyl WDO 3060 • OP259

Vinyl WDO 2050 additional • OP261

Vinyl WDO 2030 tempered glass additional • OP262 • AOP140

Vinyl WDO 2630 tempered glass additional • OP263 • AOP141

Vinyl WDO 4050 w/two flanking windows • OP266 • AOP142

Vinyl WDO Transom 12 inch • OP268

Vinyl WDO Awning 3015 • OP2691



400 Series Wood Windows

Available in white, sandtone, or black with white painted wood interior

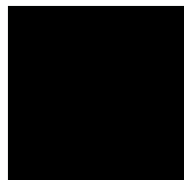
- Interior Wood Painted White
- Wood Frame with Exterior Vinyl Clad
- Wood Sashes with Flexacron Finished Exterior
- High Performance Low-E4 Argon filled glass
- Standard with colonial grids
- Comes Standard Double Hung with Casement in Kitchen
- Tru-View insect screen
- Heatlock glass
- Limited Lifetime Warranty*



White



Sandtone



Black

Specialty Windows



Left: Vinyl window 2040 tempered window with plantation shutters (Not available in 400 series) • OP625

Right: Acrylic Block window

38"/8" • OP282

42"/42" • OP281 • AOP144



Lofted Cape Options

These loft options come with an unfinished cathedral interior to be finished on site by others. Shipped with no insulation or drywall.

Left: Shown with Round Top and 1/4 Round Windows and (2) Optional Patio Doors

- 26W **OP124**
- 28W **OP125**
- 30W **OP897**

Right: Shown with Two Trapezoid Windows and (2) Optional Patio Doors

- 26W **OP121**
- 28W **OP122**
- 30W **OP896**



Lofted Cape & 9/12 Cathedral

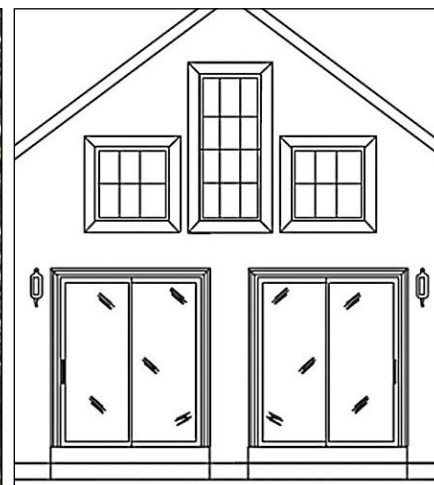
These loft options come with an unfinished cathedral interior to be finished on site by others. Shipped with no insulation or drywall.

Left: Lofted Cape Shown with (2) 3/0 x 3/0 Windows, and (2) 3/0 x 6/0 Windows, (2) Optional Patio Doors

- 26W **OP845**
- 28W **OP846**
- 30W **OP895**

Right: Shown with standard window configuration of (2) 3/0 x 3/0 Windows, and (1) 3/0 x 6/0 windows, (2) Optional Patio Doors

- 26W **OP847**
- 28W **OP848**
- 30W **OP894**





Attics

Above: Attic non habitable 9/12 with 3/4 deck and 2x6 attic endwalls w/R25 insulation under floor. (non habitable)

See Sales Rep for pricing options.

**Habitable option available.*

Right: Attic or habitable 12/12 with 3/4 deck and 2x6 endwalls. R30 insulation under floor.



Stairway

Add a full stairway to any ranch with a 9/12 or 12/12 roof pitch. See Sales Rep for pricing options.

Right: Optional Attic drop down steps for 9/12 roof pitch, R38 insulation, no decking • **OP132**



Below: Structural Misc.

Recessed entry with stone or siding to bottom of door. Floor panned for onsite concrete 16" or 24".

** Shown with stone*

Stone • **OP139**

Siding • **OP138** • **AOP30**





Standard DELTA Faucets



Single Handle Kitchen
Faucet with Spray
– Polished Chrome



Bathroom Faucet
– Polished Chrome



Shower Trim
– Polished Chrome



Tub/Shower Trim
– Polished Chrome



Two Handle Laundry Faucet
– Polished Chrome

Stand Alone Tub DELTA Faucets



Roman Tub Trim
– Polished Chrome



Roman Tub Trim
– Brushed Nickel



Roman Tub Trim
– Oil Rubbed Bronze

Brushed Nickel or Oil Rubbed Bronze DELTA Faucet Upgrade • OP177 • AOP164



Single Handle Kitchen Faucet
with Spray –
Brushed Nickel



Single Handle Kitchen Faucet
with Spray –
Oil Rubbed Bronze



Bathroom Faucet
– Brushed Nickel



Bathroom Faucet
– Oil Rubbed Bronze



Shower Trim
– Brushed Nickel



Shower Trim
– Oil Rubbed Bronze



Tub/Shower Trim
– Brushed Nickel



Tub/Shower Trim
– Oil Rubbed Bronze

Alternate DELTA Faucet Upgrades



Single Handle Pull-Down Kitchen
Faucet - IPO Standard
– Polished Chrome • OP201 • AOP82



Single Handle Pull-Down Kitchen
Faucet
– Brushed Nickel • OP201 • AOP82



Single Handle Pull-Down Kitchen
Faucet
– Oil Rubbed Bronze • OP201 • AOP82



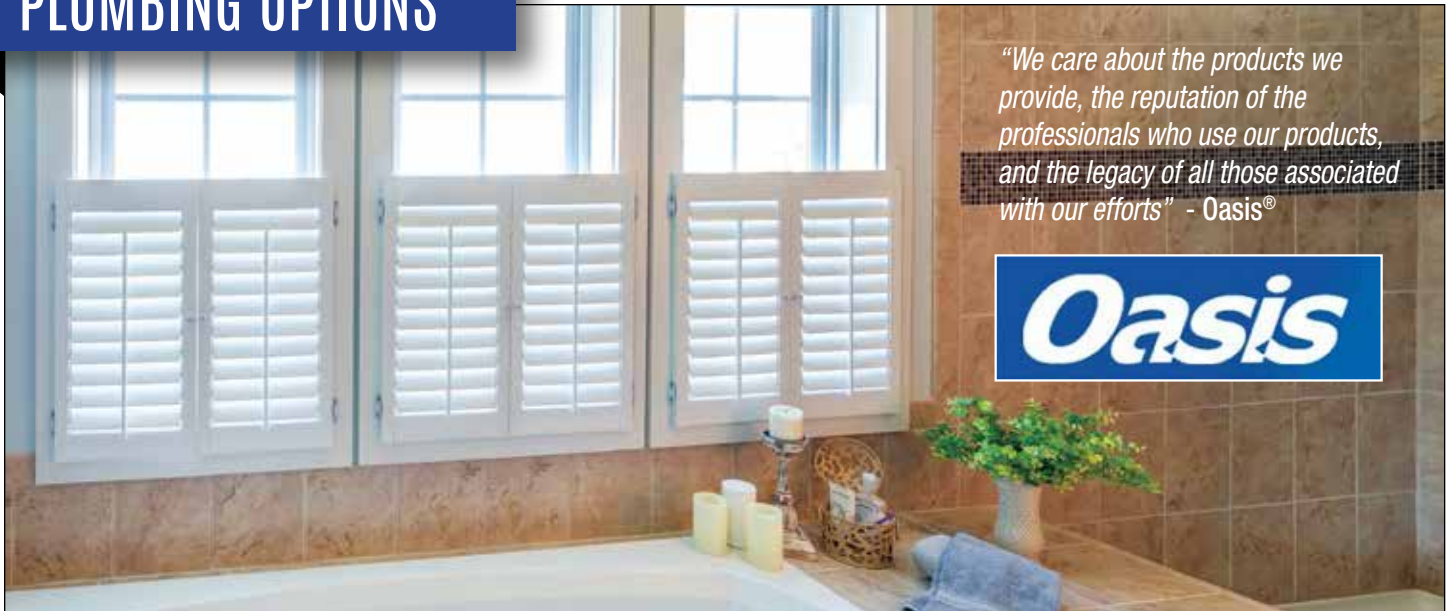
Single Handle Bar Faucet
– Polished Chrome • OP203 • AOP84



Single Handle Bar Faucet
– Brushed Nickel • OP203 • AOP84



Single Handle Bar Faucet
– Oil Rubbed Bronze • OP203 • AOP84



Showers



Left: Shower A-60" Tub/Shower Standard



Right: Shower C-48" shower with sliding enclosure in place of 48" fiberglass with sliding enclosure
• **OP1073**



Left: Shower D-60" shower with enclosure in place of tub/shower. • **OP180**

Also available with ceramic on walls, no seats.
Shower C • **OP189** Shower D • **OP190**



Right: Shower E-60x43 bench shower in place of standard tub/shower
OP181 • AOP67

Showers

Right: Shower Oh! acrylic paneled shower with cultured marble print. 5'x5' shower pan with rainfall showerhead. Standard with transom window and two shower heads.

IPO 48" Shower and drop in tub
OP1811 (In Ceramic **OP1813**)
 IPO 48" Shower
OP1812 (In Ceramic **OP1814**)



Left: Roll in shower— 50x50 in place of standard w/(1) grab bar

OP196 • AOP77

Fold down seat in roll in shower

OP197 • AOP78

Grab bar for tub/shower (1)

OP200 • AOP81

Right: Tub/ Shower G Fiberglass tub with ceramic tile on wall. Beige or Grey with accent. **OP1841**

Not Pictured: Hand held shower head(shower head only)

OP199 • AOP80

*Add Whirlpool to any tub or tub/shower combo **OP193 • AOP74**



60in Chrome Barn Shower Door

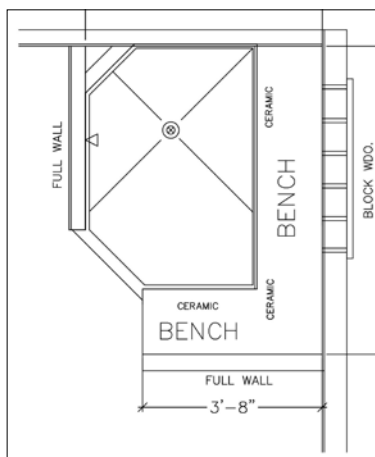
- Contemporary barn door w/ a minimalist design
 - Slim stainless header with 18 in. handle
 - Chrome finish
 - 78 3/4" high clear glass panel
 - 8 mm (5/16") tempered glass with Lotus easy clean protection
 - Detachable door guide to distance the glass when cleaning
- (Available with Shower OH! and 60in. Ceramic Only)
OP2022 • AOP2022



Serenity Showers

Pictured Left: Shower N1

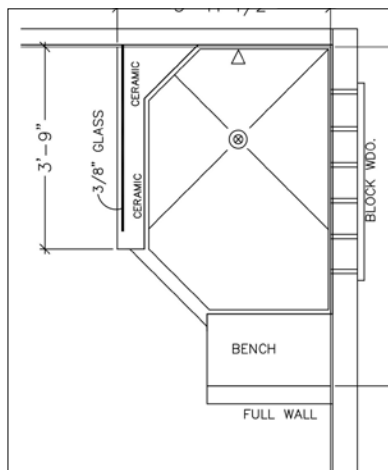
Serenity ceramic walk in shower with bench, standard with block window (not shown), can light, rainfall showerhead, and Delta Components • **OP994**



Shower N2

Serenity ceramic walk in shower with full bench, standard with block window, can light, rainfall showerhead and Delta components • **OP1145**

*Layout shown for N2 and N4



Shower N3

Serenity ceramic walk in shower with bench, 1/2 wall, and glass, standard with block window, can light, rainfall showerhead and Delta components • **OP1146**

*Layout shown for N1 and N3

Shower N4

Serenity ceramic walk in shower with full bench, 1/2 wall with glass, standard with block window, can light, rainfall showerhead and Delta components • **OP1147**



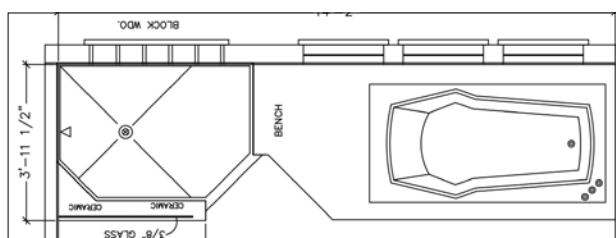
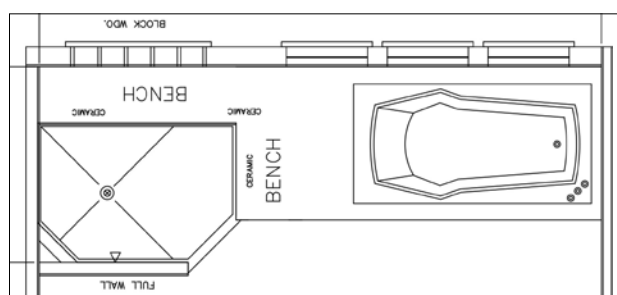
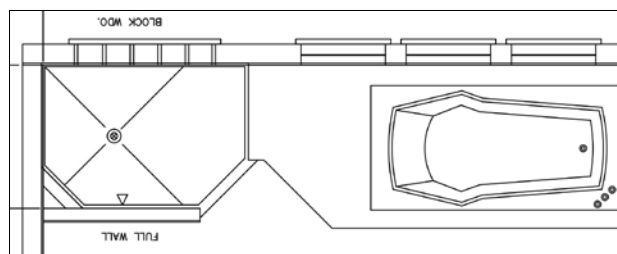
*Available in Beige or Gray Tile

Tranquility Baths

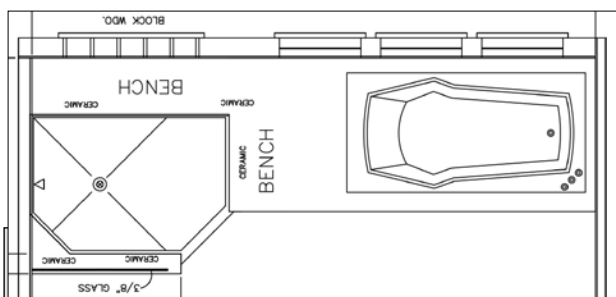
**Available in Beige or Gray Tile*

T1-Ceramic walk in shower with 72" tub, may change plan, total length 14' 2". Includes windows & shutters shown, can light, rainfall shower head and Delta components • **OP872**

T2-Ceramic walk in shower with 72" tub, may change plan, total length 14' 2". Includes full bench, windows & shutters shown, can light, rainfall shower head, and Delta components • **OP1149**



T3-Ceramic walk in shower with 72" tub, may change plan, total length 14' 2". Includes 1/2 wall, and glass, windows & shutters shown, can light, rainfall shower head and Delta components • **OP1148**



T4-Ceramic walk in shower with 72" tub, may change plan, total length 14' 2". Includes full bench, 1/2 wall with glass, windows and shutters shown, can light, and rainfall shower head • **OP1150**



PLUMBING OPTIONS



Sinks

Left: Standard stainless steel kitchen sink 7 1/4" depth

Right: Standard china lav bowl

Center: Kohler Vault Stainless Steel Single Bowl topmount, 10" depth
OP2020

Right: Composite Kitchen sink available in white or bone
OP202 • AOP83



Left: Double lavs **OP178 • AOP62**

Right: Black Kitchen Sink
 • Crafted from Natural Quartz
 • Stain, impact, heat, and scratch resistant
 • Sound-deadening material
 • Hygiene protection
 • **OP2021**



Left: Drop down bath sink • **OP2000**

Right: Lowered kitchen sink for wheel-chair access • **OP2001**



Left: Washtub installed in cabinet
OP206 • AOP87

Center Pedestal Sink **OP178**

Right: Elongated Toilet (no photo)
OP179 • AOP63
Physically challenged comfort height
OP194 • AOP75



Tubs



Tub M – Ceramic backsplash for corner tub w/(1) row of accent tile • **OP192**



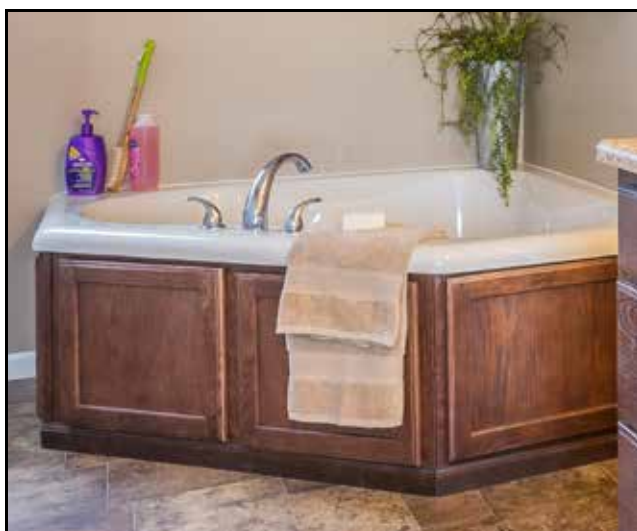
Tub L – Ceramic top on drop in tub, with 45" of backsplash, one row of accent tile • **OP191**



Tub G – Drop in tub with laminate top



Tub H – 72" tub in place of standard **OP904** • **AOP501**



Tub I – Corner Fit Tub



Tub B – Garden tub/shower in place of standard **OP903** • **AOP500**

ELECTRIC OPTIONS



Standard Brushed Nickel Lighting



Standard Morning Room/ Open Foyer

Optional Foyer-**OP231**



Walk In Closet



Dining Room



Bedroom/Foyer



Optional Pendant
OP230



Exterior Coach

Optional Rustic Bronze Lighting



Walk In Closet



Bedroom



Optional Pendant
OP230



Standard Morning Room/ Open Foyer

Optional Foyer-**OP231**



Dining Room



Exterior Coach



Optional

USB/Power outlet in place of standard
USB/Power outlet Additional

OP1250 • AOP1001
OP1252 • AOP1002



Exterior Trim and Shutters



5 1/2" trim replace shutters white or clay
Ranch/Cape • **OP354** • **AOP162**
Two Story • **OP355**

Standard Raised Panel Shutters



Board and Batten Shutters replace standard
Ranch/Cape • **OP357**
Two Story • **OP358**



Winestone
Board & Batten/Raised



Dark Navy
Board & Batten/Raised



White
Board & Batten/Raised



Gray
Board & Batten/Raised



Black
Board & Batten/Raised



Pebblestone Clay
Board & Batten/Raised



Peppercorn
Board & Batten/Raised



Spanish Moss
Board & Batten/Raised



Blackwatch Green
Board & Batten/Raised



Red
Board & Batten/Raised

EXT Trim-Sandtone/Clay two story trim package window, door, drip edge, fascia, soffit
 EXT Trim-Sandtone/Clay cape trim package window, door, drip edge, fascia, soffit
 EXT Trim-White trim package window, door, drip edge, fascia, soffit
 EXT Trim-Sandtone/Clay ranch trim package window, door, drip edge, fascia, soffit

OP349
OP350
OP3481
OP348 • AOP161

THERMA-TRU® DOORS



Door Handles



Brushed Nickel
Exterior door knob and
dead-bolt standard



Rustic Bronze
Exterior door knob and
dead-bolt standard



Brushed Nickel
Exterior door
decorative handle
• **OP337**

Rustic Bronze
Exterior door
decorative handle
• **OP337**

Patio Doors



Therma-Tru 2 panel
hinged grids and
screen
• **OP343**
• **AOP158**



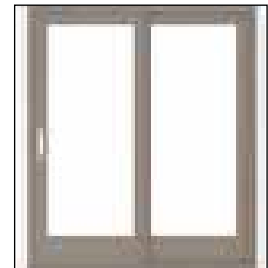
Vinyl 2 panel sliding
with screen
• **OP342**
• **AOP157**



RS130 6068 HPD
Therma Tru 2 panel
hinged with blinds and
screen
• **OP830** • **AOP413**



200 Series Perma
Shield 2 panel gliding
with screen. NO GRIDS.
Int/Ext match • **OP345**

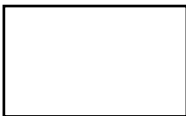
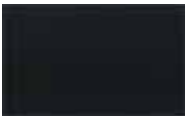
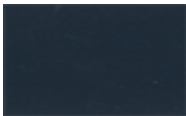

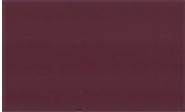
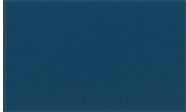


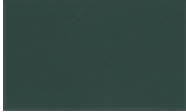







A Series 2 panel sliding
w/screen. NO GRIDS.
EXT. White painted Int
• **OP344**






NOT PICTURED: A Series 2 Panel Hinged. NO GRIDS. Choose EXT. White Painted Int. • **OP346**

Door Colors

THERMA TRU®
DOORS

	112 Apline		110 Onyx OP1391 • AOP4111		130 Indigo OP1392 • AOP4112
	122 Sand		152 Cabernet OP1393 • AOP4113		134 Blue OP1398 • AOP4118
	106 Granite OP1394 • AOP4114		132 Wedgewood OP1399 • AOP4119		144 Forrest Green OP1395 • AOP4115
	108 Gray OP1351 • AOP4231		140 Candy Apple OP1396 • AOP4116		138 Teal OP1397 • AOP4117
	104 Champagne OP1400 • AOP4120		154 Maroon OP1401 • AOP4121		

Wood Grain Stains

	Bark OP1353 • AOP4233		Driftwood OP1352 • AOP4232		Barley OP1402 • AOP4234
	New Earth OP1403 • AOP4235		Raven OP1404 • AOP4236		





Door A: Upgrade Steel 6 panel 20 min door w/20 min wood jamb or a 90 min door with steel jamb rear door:
OP598 • AOP301



Door B: Decorative Oval:

Painted	Wood Grain
• OP599	• OP9431
• AOP302	• AOP3083
Sidelight:	
• OP3331	• OP3411
• AOP1361	• AOP1381
Transom:	
• OP3351	• OP3251
• AOP1391	• AOP1371



Door C: Decorative Full Axis Glass:

Painted	Wood Grain
• OP5991	• OP9432
• AOP303	• AOP3084
Sidelight:	
• OP3332	• OP3412
• AOP1362	• AOP1382
Transom:	
• OP3352	• OP3252
• AOP1392	• AOP1372



*Door D: 3/4 glass, twelve light:

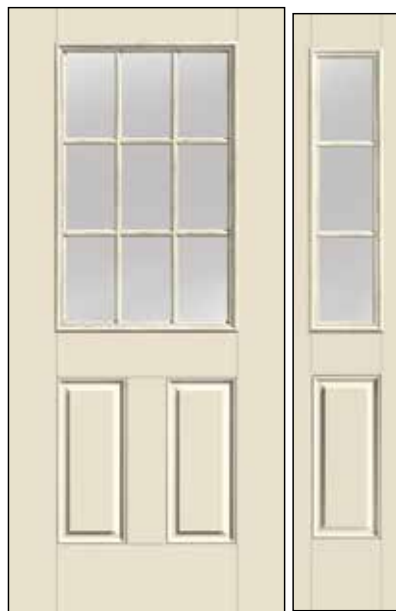
Painted	Wood Grain
• OP5992	• OP9433
• AOP304	• AOP3085
Sidelight:	
• OP3333	• OP3413
• AOP1363	• AOP1383
Transom:	
• OP3353	• OP3253
• AOP1393	• AOP1373



*Door E: Six light, raised panel:

Painted	Wood Grain
• OP5993	• OP9434
• AOP305	• AOP3086
Sidelight:	
• OP3334	• OP3414
• AOP1364	• AOP1384
Transom:	
• OP3354	• OP3254
• AOP1394	• AOP1374

• Doors shown for style purposes only



*Door F: Nine light, exterior grids:

Painted	Wood Grain
• OP5994	• OP9435
• AOP306	• AOP3087
Sidelight:	
• OP3335	• OP3415
• AOP1365	• AOP1385
Transom:	
• OP3355	• OP3255
• AOP1395	• AOP1375



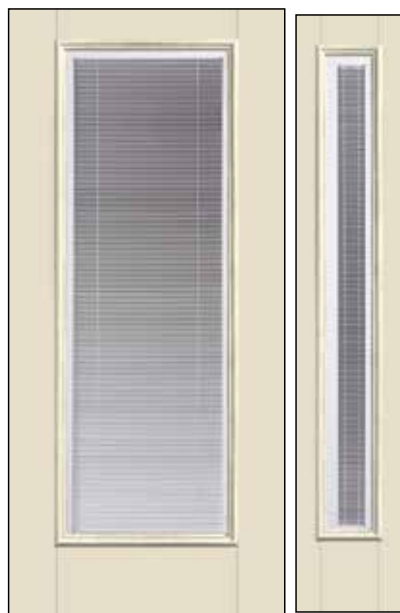
*Door G: Four Light:

Painted	Wood Grain
• OP5995	• OP9436
• AOP307	• AOP3088
Sidelight:	
• OP3336	• OP3416
• AOP1366	• AOP1386
Transom:	
• OP3356	• OP3256
• AOP1396	• AOP1376



*Door H: Half glass, no grids:

Painted	Wood Grain
• OP5996	• OP9437
• AOP308	• AOP3011
Sidelight:	
• OP33361	• OP3417
• AOP1367	• AOP1387
Transom:	
• OP3357	• OP3257
• AOP1397	• AOP1377



*Door I: Nine light, exterior grids:

Painted	Wood Grain
• OP5997	• OP9438
• AOP3081	• AOP3012
Sidelight:	
• OP3338	• OP3418
• AOP1368	• AOP1388
Transom:	
• OP3358	• OP3258
• AOP1398	• AOP1378



*Door J: Nine light, exterior grids:

Painted	Wood Grain
• OP5998	• OP9439
• AOP3082	• AOP3013
Sidelight:	
• OP3339	• OP3419
• AOP1369	• AOP1389
Transom:	
• OP3359	• OP3259
• AOP1399	• AOP1379

SIDING & SHINGLES



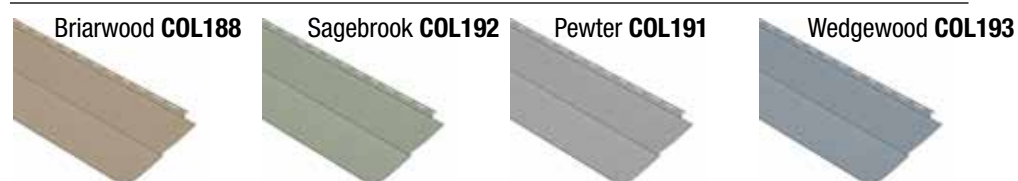
Forest Ridge®, Shadow Ridge®, and Compass®



Group A Standard OP1132 • A0P551



Group B OP1133 • A0P552



Group C *Compass OP1134 • A0P553



*Available in Traditional Lap only

Group D *Compass

OP1135 • A0P554



Northern Oak
COL212

Hearthstone Brown
COL213

Cedar Spectrum Siding



Siding-Vinyl round or shingle in place of standard siding **OP380 • A0P571**

Siding-Vinyl round or shingle in place of upgrade siding **OP381 • A0P572**

TruDefinition® Duration® Series shingles with SureNail® Technology



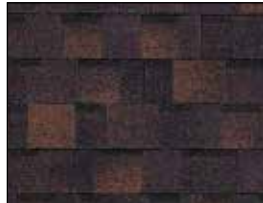
Limited Lifetime Warranty	
Algae Resistance:	10 Years
Design:	Bold Contrast, Deep Dimension
Shingle Type:	Laminated
Wind Resistance:	130 mph
Nominal Size:	13 ¹ / ₄ " x 39 ³ / ₈ "



Amber **COL140**



Desert Tan **COL144**



Brownwood **COL141**



Teak **COL151**



Driftwood **COL145**



Onyx Black **COL148**



Estate Gray **COL146**



Terra Cotta **COL164**



Quarry Gray **COL149**



Sierra Gray **COL150**



Colonial Slate **COL143**



Harbor Blue **COL147**



Chateau Green **COL142**



Shasta White **COL152**

TruDefinition® Duration® Series Designer Colors-OP384



Aged Copper **COL154**



Merlot **COL155**



Pacific Wave **COL156**



Sand Dune **COL157**



Sedona Canyon **COL158**



Storm Cloud **COL159**



Summer Harvest **COL160**



Construction: 3/4" Solid wood face frames, reinforced and aligned with dowels and adhesive.

Drawers: Front is 3/4" thick. Also have WhisperGlide 75# capacity glides. Deluxe drawer option with 5/8" dovetailed construction and full extension undermount glides with soft-action technology available.

Roll Out Trays: Base cabinet roll out trays optional

Overhead Cabinet Shelves: 3/4" thick fully adjustable overhead shelves

Hinges: 6-way adjustable self closing concealed hinges with limited life time warranty

Warranty: 10-25 year limited warranty depending on cabinets

Cabinet Group A

Square recessed panel overhead and base cabinets-Partial Overlay

**Spring Valley
Oak Amaretto**



**Spring Valley
Oak Pecan**



Ranch/Cape • **OP485**

Two-Story • **OP491**

Ranch • **AOP560**

- Cab Misc42" wall cabinet replace standard 30"- **OP502**
- Cab Misc-6" rise in wall cabinet, over range or refer- **OP503 • AOP188**
- Specialty Cab-Add roll out trays in center of base cabinets **KIT/UTL-OP1151 • AOP561**
- Specialty Cab-Deluxe drawer option for **KIT and UTL-OP481 • AOP559**

Cabinet Group B

Square recessed panel overhead and base cabinets-Partial Overlay

**Spring Valley
Maple Pecan**



**Spring Valley
Maple Sedona**

**Spring Valley
Maple Kona**

Ranch/Cape • **OP483**

Two-Story • **OP493**

Ranch • **AOP5610**

Cabinet Group C

Square recessed panel overhead and base cabinets-Partial Overlay

Spring Valley
Hickory Natural



Marlin Maple
Kona



Marlin Maple
Pecan



Ranch/Cape • **OP484** Two-Story • **OP476** Ranch • **AOP5603**

Cabinet Group D

Square recessed panel overhead and base cabinets-Partial Overlay

Spring Valley
Maple Cotton



Marlin Maple
Cotton



Spring Valley
Maple Graphite



Spring Valley
Maple Nightfall



Marlin Maple
Nightfall



Ranch/Cape • **OP4861** Two-Story • **OP4862** Ranch • **AOP5601**

Cabinet Group E

Arched door style overhead cabinets and square door style on base cabinets-Partial Overlay

Square recessed panel overhead and base cabinets-Full Overlay



**Seneca Ridge
Oak Amaretto**



**Seneca Ridge
Oak Pecan**



**Ralston
Maple Sedona**



**Ralston
Maple Pecan**



**Ralston
Maple Kona**

Ranch/Cape • **OP486** Two-Story • **OP477**

Cabinet Group F

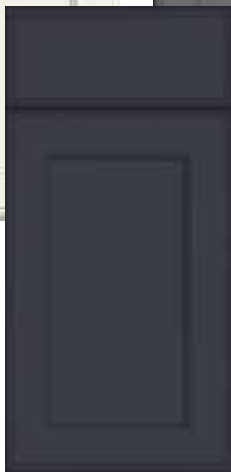
Square recessed panel overhead and base cabinets-Full Overlay

Arched door style overhead cabinets and square door style on base cabinets-Partial Overlay

**Ralston Maple
Cotton**



**Ralston Maple
Graphite**



**Ralston Maple
Nightfall**

Ranch/Cape • **OP492**
Two-Story • **OP1084**

**Seneca Ridge
Maple Sedona**



**Seneca Ridge
Maple Pecan**



**Seneca Ridge
Maple Kona**



Standard Range Hoods

- Standard white range hood
- Hood, microwave, microwave prep, vented outside • **OP552**
- Stainless Steel **OP1164**

Stainless steel wall mount with ceramic back splash vented outside. Optional with extended glass tile and 36" area around range hood in place of standard 54"

**Shown with optional glass cabinets*

• **OP498**



Wood wall mount with 6" rise replacing standard, vented outside, standard without rail

**Shown with optional glass cabinets*

OP497 • AOP184

Specialty Additions



Wall wine storage cabinet WSC1818
with W1812
OP5211 • AOP4051



Above: Angle overhead cabinet with mullion
glass door, arched or square to match cabinets
OP557 • AOP191

Not pictured: Appliance garage diagonal
OP517 • AOP199



24" overhead open bookshelf with
organizer in place of overhead 2430
OP825 • AOP420



Wall message center on end of
cabinets-36in or 42in
OP5212 • AOP4052

Specialty Additions

Left: 9" base pull out pantry in place of standard cabinet

OP521 • AOP404

Right: 6" overhead "What Not" shelf

• OP513



Double base waste basket
top mount **OP854 • AOP201**



Base angle cabinet **OP510 • AOP192**



36" Pantry with Swing out racks in
place of 18" **OP489 • AOP5614**



3-Drawer 30" base pots and pans
drawer in place of standard cabinet
OP520 • AOP402

Not Pictured 36" base pots
and pans 2-drawer in place
of standard cabinet
OP557 • AOP5617

Specialty Additions



Deluxe Drawer option for kitchen and utility available with classic line only. **OP481 • AOP559**

Thicker core drawers-5/8" thick drawer core provides a remarkably solid frame.

Dovetail drawer construction-durable and includes the SoftAction+Technology on drawers only for a completely silent and effortless closing movement.

Full extension drawers-allows the drawer to be completely opened.

Plywood drawer bottom provides durable plywood bottoms to help resist sagging.



Left: Double pantry
surround refrigerator
• **OP496**

Right: Enclosed
refrigerator 36x69/
stacked washer/
dryer 30x78
opening with 24"
deep overhead
cabinet.
OP504 • AOP189



Specialty Additions



Left: Universal wall oven unit additional cabinet **OP507 • AOP409**



Right: Universal wall oven unit in place of base and overhead **OP508 • AOP400**

33" X 90" with 30" Overhead Cabinets

33" X 96" with 42" Overhead Cabinets

Appliance Opening Width 27" - 31"

Opening Height 23 3/4" - 47 1/4"

Some on site work may be necessary to fit actual appliances



Left: Glass door on wall straight cabinet 15" or 18" square or arched to match **OP405 • AOP190**

Not Pictured: Mullion glass door with matching interior
Glass door on corner wall cabinet **OP867 • AOP437**



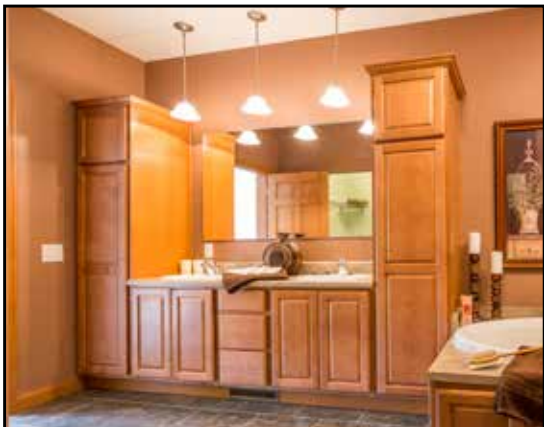
Right: Tilt out sink tray **OP522 • AOP200**



Microwave oven shelf replace 30" of overhead cabinet **OP522 • AOP202**

SPECIALTY CAB/RANGE HOOD

Specialty Additions



Left: Standard mirror with pendant lights and bank of drawers.



Right: 80" make up vanity standard size will fit in gable end wall bumpouts, comes with 3 pendant lights and mirror.



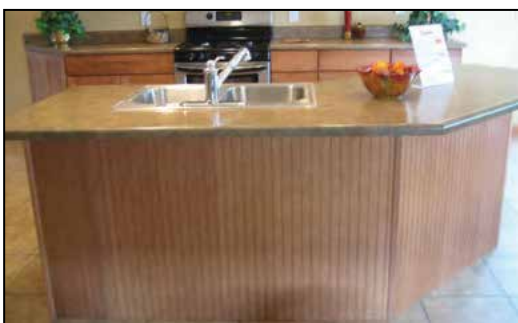
Left: Vanity storage over commode **OP556 • AOP217**



Middle: Medicine cabinet
24" replace mirror
OP554 • AOP215
36" replace mirror
OP555 • AOP216



Left: 18" Bank of drawers
OP523 • AOP204



Right: Beadboard panel on back of island • **OP512**



Left: Under cabinet lighting • **OP901**



Cabinet door knobs and drawer pulls, functional cabinets only
OP1043 • AOP5618

Ceramic Tile Colors - 12x24



Ivory



Calcatta



Gray

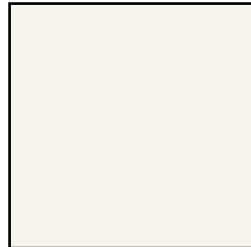
Grout Colors



Silverado

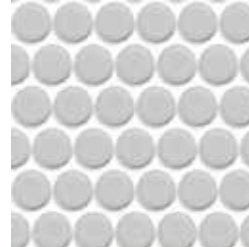


Raven



Bright White

Accent Tiles



Penny



Mosaic

Tile Options

Bathroom

COL95 – Ceramic tile 12x24 w/Silverado Grout

OP1813- Shower OH! With Ceramic Tile IPO 48in. shower and drop in tub

OP1814- Shower OH! With Ceramic Tile IPO 48in. shower/tub

Kitchen

OP498 RANGEHOOD-Stainless Steel wall mount w/ Ceramic Tile, Vented Outside

OP499- RANGEHOOD-Stainless Steel wall mount w/Subway Tile,Vented Outside

OP494 – RANGEHOOD-Stainless Steel wall mount w/Decorative Tile, Vented Outside

OP500 - Decorative accent tile between backsplash and upper cabinet



Subway Tile - White tile with white grout, installed in a brick pattern. (Also available w/ Raven or Silverado grout)
• **OP1144**



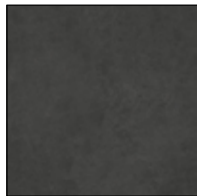
Ceramic tile between back-splash and upper cabinet (shown with optional Mosaic tile and Grey Ceramic Tile) • **OP500**



Standard Countertop Colors



Pebble Piazza
5009-60 **COL23**



Oiled Soapstone
4882-38 **COL32**



White Juparana
4931-38 **COL25**



White Cascade
5003-38 **COL30**



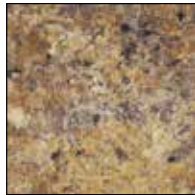
Calacatta Oro
4981-38 **COL35**



Milano Quartz
4726-60 **COL34**



Natural Canvas
7022-58 **COL36**



Butterum Granite
7732-58 **COL27**



Jamocha Granite
7734-58 **COL31**



White Carrara
4924-38 **COL231**

Optional HD/FX180 Countertop Colors



Bella Noche
1820K-35 **COL42**



Bianco Ramano
1872K-35 **COL45**



Italian White di Pesco
4954-22 **COL511**



Typhoon Ice
4952K-22 **COL28**



Winter Carnival
1874K-35 **COL40**



Crema Mascarello
3422-RD **COL39**



Dolce Vita
3420-46 **COL55**



Calacatta Marble
3460-46 **COL38**



Argento Romano
6697-46 **COL512**



Azul Aran
9303-RD **COL513**



Silver Flower Granite
9305-43 **COL517**



Antique Mascarello
3466-R **COL51**



Fantasy Marble
9302-34 **COL514**



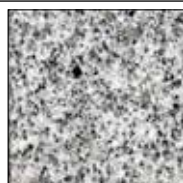
Cafe Azul
6319-RD **COL515**



Jet Sequoia
3476-46 **COL516**

Optional VanitEase Lav Countertop Colors

Granite



Meteorite G1-903
COL90



Wheat G1-902
COL89



Tigerskin White G1-904
COL85

Quartz



Tempest Carrara Q-1007
COL86



Carrara Verta Q-3009
COL87

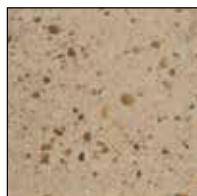


Terra Grey Q-3012
COL91

Optional Quartz Countertop Colors-Group A



Cloud White
COL2182



Toffee
OP2158



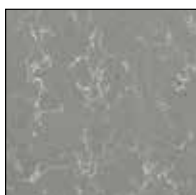
Antique Pearl
OP2161



Venetia Cream
COL2173



Strarus White
COL2179



Concrete Carrara
COL76



Onyx Carrara
COL69



Coarse Carrara
COL2181

Optional Quartz Countertop Colors-Group B



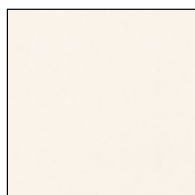
Grigione
COL65



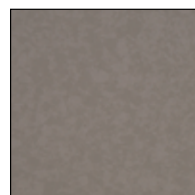
London Sky
COL217



Neve
OP2167



Snow White
COL2184



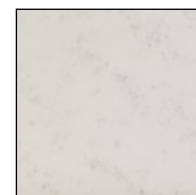
Dove Grey
COL77



Caraway
COL80

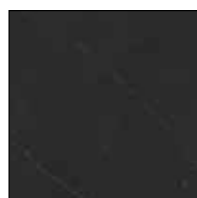


Marble Mist
COL2171

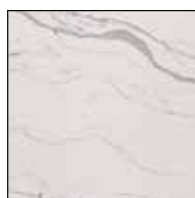


Ashen Grey
COL72

Optional Quartz Countertop Colors-Group C



Portoro
COL66



Versilia Grigio
COL2177



Pearl Stone
COL2164



Valente Pearl
COL2176



Bianco Dolomite
COL2163



Calacatta Natura
OP2166



Dove Grey*
COL2166



Venetia Cream*
COL71

*Leather Texture



Standard Desks



Desk A Kitchen unit
OP546 • AOP207



Desk B 60" hall unit
OP547 • AOP208



Desk C 57"x57" corner unit
OP548 • AOP209



Desk D 81" office unit
OP549 • AOP210



Desk E 135" office unit
OP550 • AOP211

Islands



Left: Island A 48" Island with 1" overhang all sides and receptacle on (1) end • **OP905**



Right: Island B 48" Island with 1" overhang on front and sides and 11" overhang on backside and receptacle on (1) end • **OP907**

Left: Island I 72" Island with overhang, kneehole on backside, glass doors arched or square by style on (1) end and solid doors on opposite end, fluted legs at each corner and receptacle on backside of solid door cabinet • **OP914**



Right: Island J 60" Island with 1" overhang on front and one side, raised bar with 13" overhang on back with leg supports, 24"x42" shelf section on side, receptacle on one side • **OP930**



Left: Island E Angled Island with 1" over-hang on front and sides, 11" overhang on backside with receptacle on end. (Shown with sink, will also accommodate a dish-washer) • **OP912**



Right: Island F Angled Island with 1" over-hang on front and sides, raised bar with 13" overhang on back side, receptacle on end (Shown with sink, will also accommodate a dish-washer) • **OP911**
Island F stone backing (Not shown) • **OP849**

DESKS & ISLANDS

Islands



Left: Island K double angled Island with 1" overhang on front and sides, raised bar with 13" overhang on backside, receptacle on both ends. (Shown with sink, will accommodate dishwasher) • **OP931**
With stone backing • **OP851**



Right: Island L Double angled Island with 1" overhang on front and sides, raised bar with 13" overhang on back with supports, receptacle on end • **OP932**



Above: Island N 54" Island 54" Island with 11" overhang on back, full leg supports each end and receptacle on one end • **OP934**



Above: Island S 72" Island with overhang on back, (2) pots and pans drawers, and (2) straight legs. Receptacle on one side **OP9371** • **AOP5891**

Islands



Island T 9'4" X 4'2" (2) large pots and pans drawers, and (2) straight legs.
OP9341 AOP2111



Island Q 100" X 41"
OP908 AOP1251



Island P 76" X 41"
OP909 AOP1252



Island R 64" x 41"
OP910 AOP1253





Trim Package Standard



Left: Hollow core-wood grain mesa oak doors with standard mesa oak 2 1/4" casing 3 1/4" base trim
OP434 • AOP594

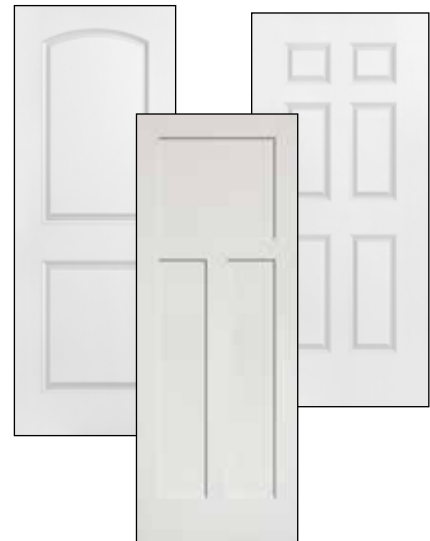


**Standard
Mesa Oak**

Right: Hollow-core white smooth doors with white 2 1/4" casing and 3 1/4" base trim
OP441 • AOP562



White



Trim Package A

Trim Package B



Toasted Cinnamon*



White



Amber Pine*



Coffee*



Solid core white or stained doors with white, toasted cinnamon, amber pine, coffee 2 1/4" casing 3 1/4" base trim
• OP425

2 panel arch top or 3 panel square doors replace standard
• OP1072

*OPTIONAL

Trim Package C

Toasted Cinnamon*

White

Amber Pine*

Coffee*



Solid core white or stained doors with white, toasted cinnamon, amber pine, coffee 3 1/4" casing and 4 1/4" base trim

• **OP588**

2 panel arch top or 3 panel square doors replace standard • **OP1072**

*OPTIONAL

Trim Package D



Solid core American Oak or Alder doors with oak 2 1/4" casing 3 1/4" base or Sappy Cherry 3" casing 4" base trim • **OP856**



Sappy Cherry Square Style*



American Oak*

Trim Package E



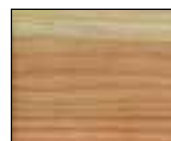
Brushed Nickel or Oil Rubbed Bronze barn door hardware on door to match
OP4341, AOP4621

Brushed Nickel or Oil Rubbed Bronze door hardware on Alder door
OP4481, AOP221



Optional Pocket Doors
OP562, OP563

Solid core American Oak doors with American Oak 3 1/4" casing 4 1/4" base trim
• **OP448**



American Oak*





- 100% Anso® Extra Body CFN (Continuous Filament Nylon)
- Treated with Shaw R2X Soil and Stain Resistance™ Long-Term Protection Against Most Household Stains and preserves and Protects Carpet's Appearance, Reduces Static Buildup
- FHA Certified
- 5-Year Stain Resistance Warranty
- Recyclable Carpet Fiber

Go Softly Carpet

35 Ounce Carpet



Iced Coffee • COL9



Kodiak Bear • COL7



Natural Wood • COL10



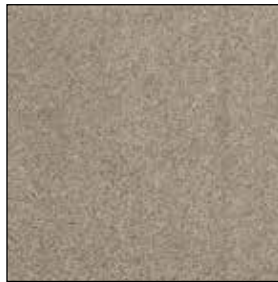
Pueblo • COL13



River Bank • COL12



Travertine • COL15



Warm Oatmeal • COL6



Twig • COL8



Wheat • COL5

Blending Upwards

42 Ounce Carpet



Coastline • COL18



Fog • COL19



Mushroom • COL20



Pleasant Valley • COL21



Tree Swing • COL22



Smoked Pearl • COL17

Encore Plank Flooring

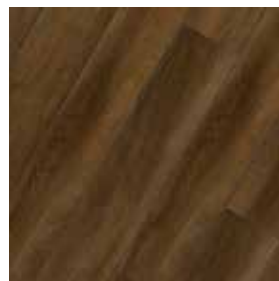
- Embossed Wear Layer
- High Definition Printed Film
- Rigid Core
- Patented Interlocking System
- Limited Warranty
- 100% Waterproof



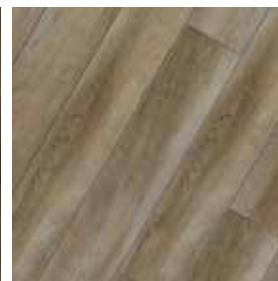
Mitchell LUM-464
COL96



Mayville LUM-465
COL97



Crosby LUM-466
COL98



Mapleton LUM-467
COL99

Encore Tile Flooring



Almont LUM-468
COL100



Ross LUM-469
COL101



Sharon LUM-470
COL102



Verona LUM-471
COL103





Livewire II Carpet

- Nylon fibers and Polypropylene backing
- Treated with Shaw R2X Soil and Stain Resistance™
*Long-Term Protection Against Most Household Stains
Preserves and Protects Carpet's Appearance
Reduces Static Buildup*
- Recyclable
- Resilient
- 13 oz. Carpet



Suede
COL199



Brownwood
COL201



Rockslide
COL202

LuxFloor By Congoleum® Vinyl Flooring



Barn Wood Greige
LX277 **COL226**



Barn Wood Vintage
White LX275 **COL197**



Aged European Oak
Farmstead LX310 **COL1284**



Trinsic Modern Brown
LX320 **COL1285**



Rustic Plank Antique Bronze
LX151 **COL228**



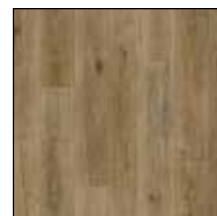
Meteor Hillsborough
Beige LX300 **COL117**



Rockport Greyhound
LX285 **COL1287**



Travertino White Dove
LX305 **COL227**



Aged European Oak
Natural LX311 **COL198**



Saddle Ridge
Weatherwood LX295 **COL196**



Blinds and Columns



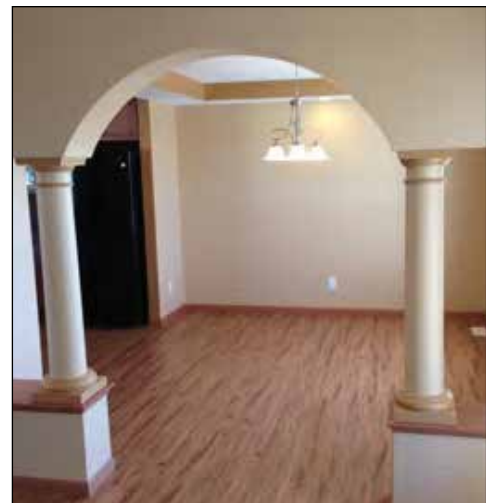
Left: Blinds 2" faux white wood available on vinyl windows excludes picture and transom
OP624 • AOP277

Right: Fluted wood column to match trim per pair
OP614 • AOP267

Left: Round painted column (shown with optional tray ceiling)
OP613 • AOP266

Right: Grand Archway 5' arch with Victorian or fluted columns, wood capped 1/4 walls • **OP1042**

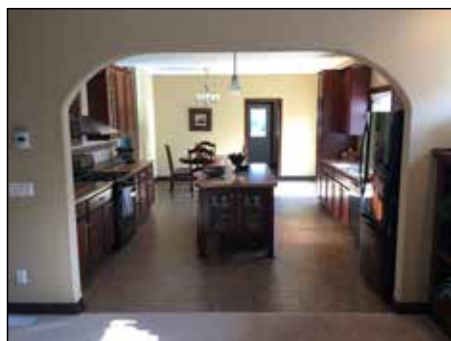
Not Pictured: Round drywall corners **OP612 • AOP265**



INTERIOR FINISH

Drywall Options

All interior decorative wood components added will match trim color.



Left: Drywall arch (shown with optional wood columns)
4 foot **OP615 • AOP268**
5 foot **OP616 • AOP269**

Right: Large opening drywall arch (inset picture shown with wood columns) **OP617 • AOP270**

Left: Tray ceiling with 4 recessed can lights **OP620 • AOP273**

Right: Art Niche wood stained to match trim • **OP864**



Left: Coffered Ceiling w/white crown moulding, see print • **OP1070**

Right: Closet Organizer Component Additional. White Only **OP6220 • AOP2750**

Interior Handles

Left: Interior lever handle-Standard brushed nickel **OP622 • AOP275**

Right: Interior lever handle-Optional rustic bronze **OP623 • AOP276**





SAMSUNG

Homeowner Samsung Programs

Purchase through Rochester Homes for the best Support and Service, and receive the following exclusive benefits.

- 1 Full year parts and labor plus 30 Day Cosmetic Warranty on all products.
- Dedicated Samsung Builder Service Support Team.
- 3 Year Warranty Program for Samsung packages that include refrigerator and laundry pair.

Friends and Fans Program:

- 1 Year Warranty= Base Package: Range OR Built-in Oven & Cooktop + Microwave OR OTR Microwave OR Hood + Dishwasher
- 3 Year Warranty= Upgrade Package: Base Package Appliances + Refrigerator + Washer & Dryer

PACKAGE A-STAINLESS OP7001

All package items are available for individual purchase.



Samsung RT18M6215SR 18 Cu. Ft. Top Mount • OP6671

- Flex Zone freezer Converts to Refrigerator
- Twin Cooling System – Two evaporators
- Slide & Reach Pantry
- Factory Installed Icemaker
- Energy Star
- 28 ¾" wide



Stainless Range Hood • OP1164

- Vented Outside



Samsung NE59M4310SS Electric Range • OP6672

- 5.9 Cu. Ft. Capacity Oven
- Hidden Bake Element
- Self Clean
- Wide View Window
- 5 Elements. 2 Dual. One Warming Center



Samsung DW80M2020US Dishwasher • OP6673

- Quiet Operation – 55 dba
- Digital Leak Sensor
- Stainless Steel Interior Door/ polymer tub
- Nylon Racks
- Adjustable Upper Rack
- Top Controls

Optional Gas Range to Take Place of Electric Range



Samsung NX58K3310SS Stainless Gas Range • OP6771

- 5.8 Cu. Ft. Oven Capacity
- Hidden Bake Element
- 5 Burner Flexible Cooktop
- 17K BTU Power Burner
- Manual Clean Oven

SAMSUNG

PACKAGE B-STAINLESS OP7002

Package includes option to replace refrigerator with Family Hub Unit • OP9811

All package items are available for individual purchase.



Samsung Side By Side Refrigerator RS27T5200SR Stainless

• OP6674

- 27.5 Cu. Ft.
- LED Lighting
- 4 Tempered Glass Shelves
- In-Door Ice Maker
- External Water/Ice Dispenser



Samsung ME16K3000AS OTR Microwave • OP6775

- 1.6 Cu. Ft. Oven Capacity
- LED Display
- 300 CFM Ventilation System
- Turntable On/Off



Samsung DW80M2020US Dishwasher • OP6673

- Quiet Operation – 55 dba
- Digital Leak Sensor
- Stainless Steel Interior Door/ polymer tub
- Nylon Racks
- Adjustable Upper Rack
- Top Controls



Samsung NE59M4310SS Electric Range

• OP6672

- 5.9 Cu. Ft. Capacity Oven
- Hidden Bake Element
- Self Clean
- Wide View Window
- 5 Elements. 2 Dual. One Warming Center

Optional Gas Range to Take Place of Electric Range



Samsung NX58K3310SS Stainless Gas Range

• OP6771

- 5.8 Cu. Ft. Oven Capacity
- Hidden Bake Element
- 5 Burner Flexible Cooktop
- 17K BTU Power Burner
- Manual Clean Oven

Due to Samsung's commitment to improvement in features, technology and specifications appliances are subject to change without notice. In such cases Samsung reserves the right to substitute appliances of greater or equal value.

PACKAGE C-STAINLESS OP7003

Package includes option to replace refrigerator with Family Hub Unit • OP9811
All package items are available for individual purchase.



**Samsung RF263BEAESR
French Door Refrigerator**
• OP6675

- 26 Cu. Ft.
- Digital Inverter Compressor
- High Efficiency LED Lighting
- Twin Cooling – 2 Evaporators
- Ice Master makes 10 lbs. of ice per day
- Cool Select Pantry Temperature Controlled
- Filtered Water



**Samsung ME16K3000AS
OTR Microwave** • OP6775

- 1.6 Cu. Ft. Oven Capacity
- LED Display
- 300 CFM Ventilation System
- Turntable On/Off



**Samsung NE59M4320SS
Electric Range**
• OP6676

- 5.9 Cu. Ft. Capacity Oven
- Hidden Bake Element
- 5 Elements. 2 Dual. One Warming Center
- Stainless Steel Cooktop and Die Cast Knobs
- Convection Oven



**Samsung DW80N3030US
Dishwasher** • OP6677

- Full Stainless Interior
- Digital Leak Sensor
- Quiet Wash 51 dba
- Front Controls with Pocket Handle
- Adjustable Nylon Racks
- Hidden Heat element

Optional Gas Range to Take Place of Electric Range



**Samsung NX58H5600SS
Stainless Gas Range**
• OP6772

- 5.8 Cu. Ft. Oven Capacity
- Fan Convection Self Clean Oven
- Hidden Bake Element
- 5 Burner Flexible Cooktop
- 17K BTU Power Burner
- Comes with Griddle!

Due to Samsung's commitment to improvement in features, technology and specifications appliances are subject to change without notice.
In such cases Samsung reserves the right to substitute appliances of greater or equal value.

PACKAGE D-STAINLESS OP7004

Package includes option to replace refrigerator with Family Hub Unit • OP9811
All package items are available for individual purchase.



Samsung RF28R7201SR
4 Door French Door
• OP6678

- 28 Cu. Ft.
- Flex Zone Drawer – 4 Temp., Kid Height
- Twin Cooling Plus – 2 Evaporators
- LED Lighting
- Digital Inverter Compressor
- Ice Master makes up to 10 lbs. per day



Samsung ME18H704SFS
OTR Microwave • OP6681

- 1.8 Cu. Ft. Oven Capacity
- Ceramic Enamel Interior
- LED Display
- Halogen Cooktop and Interior Light
- 400 CFM Ventilation System
- Simple Clean Filter
- Cooking Presets



Samsung NE59M6850SS
Electric Range • OP6679

- Flex Duo with Dual Door
- Dual Fan Convection
- 5.9 Cu. Ft. Oven Capacity
- 5 Elements – 2 Dual for Flexibility
- Wi-Fi Connectivity Remote Control



Samsung DW80K5050US
Dishwasher • OP6682

- Stainless Interior
- Digital Leak Sensor
- Quiet Wash 48 dba
- Hidden Heating Element
- Adjustable Nylon Racks
- Storm Wash – 4th spray arm
- Auto Release Door Dry

Optional Gas Range to Take Place of Electric Range



Samsung NX58M6850SS
Stainless Gas Range
• OP6774

- Flex Duo with Dual Door
- Dual Fan Convection Self Clean Oven
- 5.9 Cu. Ft. Oven Capacity
- 5 Elements – 2 Dual for Flexibility
- Wi-Fi Connectivity Remote Control/Monitor from your smart phone

Due to Samsung's commitment to improvement in features, technology and specifications appliances are subject to change without notice.
In such cases Samsung reserves the right to substitute appliances of greater or equal value.



PACKAGE D- BLACK STAINLESS OP7005

Package includes option to replace refrigerator with Family Hub Unit • OP9811
All package items are available for individual purchase.

SAMSUNG



**Samsung ME18H704SFG
OTR Microwave • OP6685**

- 1.8 Cu. Ft. Oven Capacity
- Ceramic Enamel Interior
- LED Cooktop Light
- 400 CFM Ventilation System
- Simple Clean Filter
- Cooking Presets



**Samsung RF28R7201SG
4 Door French Door • OP6683**

- 28 Cu. Ft.
- Flex Zone Drawer – 4 Temp., Kid Height
- Twin Cooling Plus – 2 Evaporators
- LED Lighting
- Digital Inverter Compressor
- Ice Master makes up to 10 lbs. per day



**Samsung DW80K5050UG
Dishwasher • OP6686**

- Stainless Interior
- Digital Leak Sensor
- Quiet Wash 48 dba
- Hidden Heating Element
- Adjustable Nylon Racks
- Storm Wash
- Auto Release Door Dry



**Samsung NE59M6850SG
Free Standing Range • OP6684**

- Flex Duo with Dual Door
- Dual Fan Convection
- 5.9 Cu. Ft. Oven Capacity
- 5 Elements – 2 Dual for Flexibility
- Wi-Fi Connectivity Remote Control

Optional Gas Range to Take Place of Electric Range



**Samsung NX58M6850SG
Black Stainless Gas Range
• OP6773**

- Flex Duo with Dual Door
- Dual Fan Convection Self Clean Oven
- 5.9 Cu. Ft. Oven Capacity
- 5 Elements – 2 Dual for Flexibility
- Wi-Fi Connectivity Remote Control/
Monitor from your smart phone



In such cases Samsung reserves the right to substitute appliances of greater or equal value.
Due to Samsung's commitment to improvement in features, technology and specifications appliances are subject to change without notice.

SAMSUNG

PACKAGE E- STAINLESS OP7006

Package includes option to replace refrigerator with Family Hub Unit • OP9811
All package items are available for individual purchase.



Samsung RF28K9070SR 4 Door Flex Stainless • OP6687

- 28 Cu. Ft.
- Flex Zone – Bottom right can be freezer or refrigerator
- Flex Zone – 4 Temp Settings. Largest fresh food capacity
- LED Lighting
- Triple Cooling – 3 Evaporators
- Ice master makes up to 5 lbs. of ice per day



Samsung DW80K5050US Dishwasher • OP6682

- Stainless Interior
- Digital Leak Sensor
- Quiet Wash 48 dba
- Hidden Heating Element
- Adjustable Nylon Racks
- Storm Wash
- Auto Release Door Dry



Samsung NV51K6650DS Double Wall Oven • OP6688

- Dual True Convection
- Two 5.1 Cu. Ft. Ovens
- Steam Roast, Steam Bake for Professional Results
- Electronic Touch Display
- Wi-Fi Connectivity; Monitor and Control from your smart phone
- Hybrid Clean – Self Clean Plus Steam; 1.5 Hour
- Only available in electric



Samsung ME18H704SFS OTR Microwave • OP6681

- 1.8 Cu. Ft. Oven Capacity
- Ceramic Enamel Interior
- LED Cooktop Light
- 400 CFM Ventilation System
- Simple Clean Filter
- Cooking Presets



Samsung NA30K6650TS 30" Gas Cooktop • OP6689

Can Sub for Electric (see page 65)

- WiFi Connectivity; Monitor and Control from your smart phone
- 19K BTU Dual Burner
- 5 Burners
- Blue LED Lit Knobs

Optional Microwave oven to take place of Wall Oven and OTR Micro



Samsung NQ70M6650DS Stainless Microwave Oven Combination • OP6532

- 5.1 Cu. Ft. Oven/1.9 Cu. Ft. Microwave
- Ceramic Enamel Interior
- Convection Microwave
- Steam Cook Oven for Professional Results
- Dual Fan Convection Oven
- Electronic Touch Display
- Wi-Fi Connectivity Monitor and Control from your smart phone
- Hybrid Clean – Self Clean Plus Steam; 1.5 Hour
- Only available in electric

Due to Samsung's commitment to improvement in features, technology and specifications appliances are subject to change without notice. In such cases Samsung reserves the right to substitute appliances of greater or equal value.

Wifi Enabled

PACKAGE E- BLACK STAINLESS OP7007

Package includes option to replace refrigerator with Family Hub Unit • OP9811
All package items are available for individual purchase.



Samsung RF28K9070SG 4 Door Flex Stainless • OP67011

- 28 Cu. Ft.
- Flex Zone – Bottom right can be freezer or refrigerator
- Flex Zone – 4 Temp Settings. Largest fresh food capacity
- LED Lighting
- Triple Cooling – 3 Evaporators
- Ice master makes up to 5 lbs. of ice per day



Samsung DW80K5050UG Dishwasher • OP67014

- Stainless Interior
- Digital Leak Sensor
- Quiet Wash 48 dba
- Hidden Heating Element
- Adjustable Nylon Racks
- Storm Wash
- Auto Release Door Dry



Samsung NV51K6650DG Double Wall Oven • OP67012

- Dual True Convection
- Two 5.1 Cu. Ft. Ovens
- Steam Roast, Steam Bake for Professional Results
- Electronic Touch Display
- Wi-Fi Connectivity; Monitor and Control from your smart phone
- Hybrid Clean – Self Clean Plus Steam; 1.5 Hour
- Only available in electric



Samsung ME18H704SFG OTR Microwave • OP6685

- 1.8 Cu. Ft. Oven Capacity
- Ceramic Enamel Interior
- LED Cooktop Light
- 400 CFM Ventilation System
- Simple Clean Filter
- Cooking Presets



Samsung NA30N6555TG 30" Gas Cooktop • OP67013

Can Sub for Electric (see page 65)

- WiFi Connectivity; Monitor and Control from your smart phone
- 19K BTU Dual Burner
- 5 Burners
- Blue LED Lit Knobs

Optional Microwave oven to take place of Wall Oven and OTR Micro

Samsung NQ70M6650DG Black Stainless Microwave Oven Combination • OP6531



- 5.1 Cu. Ft. Oven/1.9 Cu. Ft. Microwave
- Ceramic Enamel Interior
- Convection Microwave
- Steam Cook Oven for Professional Results
- Dual Fan Convection Oven
- Electronic Touch Display
- Wi-Fi Connectivity Monitor and Control from your smart phone
- Hybrid Clean – Self Clean Plus Steam; 1.5 Hour
- Only available in electric

Due to Samsung's commitment to improvement in features, technology and specifications appliances are subject to change without notice. In such cases Samsung reserves the right to substitute appliances of greater or equal value.

REFRIGERATOR OPTIONS

SAMSUNG



Samsung French Door Refrigerator
RF263BEAESR • OP6675
RF263BEAESG • OP6361

- 26 Cu. Ft.
- Digital Inverter Compressor
- High Efficiency LED Lighting
- Twin Cooling – 2 Evaporators
- Ice Master makes 10 lbs. of ice per day
- Cool Select Pantry Temperature Controlled
- Filtered Water



Samsung Side By Side Refrigerator
RS27T5200SR Stainless
• OP6363
RS27T5200SG Black Stainless
• OP6362

- 27.5 Cu. Ft.
- LED Lighting
- 4 Tempered Glass Shelves
- In-Door Ice Maker
- External Water/Ice Dispenser



Samsung 4 Door Flex Refrigerator
RF28K9070SR Stainless
• OP6367
RF28K9070SG Black Stainless
• OP6366

- Flex Zone – Bottom right can be freezer or refrigerator!
- Flex Zone –Bottom right has 4 Temp Settings.
- Largest Fresh Food Capacity.
- High Efficiency LED Lighting
- Triple Cooling Plus – 3 Evaporators
- Ice Master makes up to 4 lbs. per day
- Counter Depth option available
Stainless- **OP6735**
Black Stainless- **OP67015**

Due to Samsung's commitment to improvement in features, technology and specifications appliances are subject to change without notice. In such cases Samsung reserves the right to substitute appliances of greater or equal value.

FAMILY HUB REFRIGERATOR

REPLACE WITH A FAMILY HUB FRIDGE TO ANY PACKAGE • OP9811

SAMSUNG



Samsung Family HUB French Door RF265BEAESR Stainless

- OP6365
- RF265BEAESG Black Stainless**
- OP6364
- 24 Cu. Ft.
- Wi-Fi Connectivity Family HUB 2.0 (push to 3.0)
- Voice Activation
- See Inside from Anywhere, Order Food On line, Mirror TV, Stream Music, Sync Family Calendars, Whiteboard, Etc.
- Control from your smart phone
- High Efficiency LED Lighting
- Twin Cooling Plus – 2 Evaporators
- Cool Select Pantry



Samsung Family HUB 4 Door Flex RF28N9780SR Stainless

- OP6369
- RF28N9780SG Black Stainless**
- OP6368
- 28 Cu. Ft.
- Wi-Fi Connectivity Family HUB 3.0
- Voice Activation
- See Inside from Anywhere, Order Food On line, Mirror TV, Stream Music, Sync Family Calendars, Whiteboard, Etc.
- Control from your smart phone
- Flex Zone – Bottom right can be freezer or refrigerator
- Flex Zone – 4 Temp Settings. Largest fresh food capacity
- Triple Cooling Plus – 3 Evaporators
- Ice Master Makes up to 5 lbs. per day
- Counter Depth option available
- Stainless- **OP6511**
- Black Stainless- **OP6736**



Samsung Family HUB 4 Door French Door RF28NHEDBSR Stainless

- OP6732
- RF28NHEDBSG Black Stainless**
- OP6731
- 28 Cu. Ft.
- Flex Zone Drawer – Kid height.
- Wi-Fi Connectivity Family HUB 2.0 (push to 3.0)
- Voice Activation
- See Inside from Anywhere, Order Food On line, Mirror TV, Stream Music, Sync Family Calendars, Whiteboard,
- Control from your smart phone
- High Efficiency LED Lighting
- Twin Cooling Plus – 2 Evaporators
- Counter Depth option available
- Stainless- **OP6513**
- Black Stainless- **OP6512**



Samsung Family HUB Side by Side RS27T5561SR Stainless

- OP6370
- RF28NHEDBSG Black Stainless**
- OP6371
- 26.7 Cu. Ft.
- Fingerprint Resistant Finish
- Wi-Fi Connectivity Family HUB 2.0 (push to 3.0)
- Voice Activation
- See Inside from Anywhere, Order Food On line, Mirror TV, Stream Music, Sync Family Calendars, Whiteboard,
- Control from your smart phone
- LED Lighting
- 25W Speaker



In such cases Samsung reserves the right to substitute appliances of greater or equal value.
Due to Samsung's commitment to improvement in features, technology and specifications appliances are subject to change without notice.

GAS RANGE/ BUILT IN OPTIONS



Samsung Under Cabinet Hood
NK30N7000US Stainless
 •OP6536
NK30N7000UG Black Stainless
 •OP6535

- 390/600 CFM
- Baffle Filters
- LED Lighting



Samsung 30" Electric Cooktop 
NZ30K6330RS Stainless •OP6534
NZ30K6330RG Black Stainless •OP6533

- 5 Burners – Two Dual
- Rapid Boil Element 3,300 KW
- Blue LED Illuminated Knobs
- WiFi Connectivity – Monitor From your Smart Phone

LAUNDRY OPTIONS



Package A Samsung Top Load Washer/ Dryer Electric White
WA45N3050AW/DV40J3000EW
 •OP6641/OP6411

- 4.0 Cu. Ft. Washer
- 7.2 Cu. Ft. Dryer
- Self Clean Washer
- VRT Vibration Reduction Technology
- Diamond Drum
- Sensor Dry Dryer



Package B Top Load Washer/Dryer Electric White
WA50R5200AW/DVE50R5200W
 •OP6412/OP6413

- 5.0 Cu. Ft. Washer
- 7.4 Cu. Ft. Dryer
- VRT Plus Sensor Vibration Reduction System
- Self Clean Washer
- Sensor Dry Dryer



Package C Front Load Washer/ Dryer Electric White
WF42H5000AW/DV42H5000EW
 •OP6414/OP6642

- 4.2 Cu. Ft. Washer
- 7.5 Cu. Ft. Dryer
- VRT Vibration Reduction System
- Self Clean Washer
- Sensor Dry Dryer
- Smart Care (trouble shoot from phone)
- Optional Pedestals
- **WE357A8W** -Pedestal Drawer



Wifi Enabled

Due to Samsung's commitment to improvement in features, technology and specifications appliances are subject to change without notice. In such cases Samsung reserves the right to substitute appliances of greater or equal value.

LAUNDRY OPTIONS

SAMSUNG



Package D Front Load Washer/ Electric Dryer

WF45R6300AW/DVE45R6300W – White •OP6415/OP6514

- 4.5 Cu. Ft. Washer
- 7.5 Cu. Ft. Dryer
- VRT PLUS SENSOR Vibration Reduction System
- Self Clean Washer
- Sensor Dry Dryer
- Stackable
- Optional Pedestals
WE402NW-Pedestal Drawer White
• **OP6405**
- Optional Stack Kit-SKK-8A
• **OP6409**

Package E Samsung Flex Washer Dryer

**TWO WASHERS IN ONE/TWO DRYERS IN ONE
WV55M9600AV/DVE55M9600V-Black Stainless
•OP6403/OP6404**

- 5.0 + 1.0 Cu. Ft. Washers
- 7.5 Cu. Ft. Dryer + Delicate Dry Center
- Wash and dry 2 loads at once
- Steam Wash/Steam Dry
- Super Speed 30 minute wash
- WiFi Connected Monitor From Smart Phone
- Receive Notifications when cycles end
- Smart Care (trouble shoot from phone)
- Optional Pedestals
WE272N-Pedestal Black Stainless
• **OP6406**

Package F Front Load Washer/Electric Dryer ADD WASH

**WF45K6500AW/DV45K6500EW – White
•OP6418/OP6419
WF45K6500AV/DV45K6500EV –Black SS
•OP6401/OP6402**

- 4.5 Cu. Ft. Washer /7.5 Cu. Ft. Dryer
- Add a garment any time during wash cycle.
- WiFi Connected Control from Smart Phone
- Receive Notifications when cycles end*
- Super Speed 36 minute wash
- VRT PLUS SENSOR Vibration Reduction System
- Steam Wash/Steam Dryer
- Sensor Dry Dryer
- Smart Care (trouble shoot from phone)
- Optional Pedestals
WE357A8W Pedestal Drawer White
• **OP6405**
WE357A0P Pedestal Drawer Platinum
• **OP6407**
- Optional Stack Kit- SKK-8A
• **OP6409**
- *Smart Adapter needed. **OP6441**

POWERBOT ROBOT VACUUMS

SAMSUNG

Let the house work, while you play!

- **Visionary Mapping** – Creates Optimal Cleaning Path
- **Full View Sensor** – Avoids Obstacles
- **Cyclone Force Separation** – Powerful Suction
- **WiFi Connectivity** – Control from your smart phone, manage cleaning while you are away.

Works with

Amazon Alexa. Schedule cleaning routines and coverage map.

- **Easy Pass Wheels** - Goes from carpet to hard floor with no adjustment needed.
 - **Edge Clean** – Cleans debris from corners and against walls.
- (All models come with base charging unit and air filters.)

*Rochester Homes, Inc does not include installation, training, or help with operating Samsung POWERbots.


**POWERbot Turbo VR2AK9350WK
OP6442**

- World's Most Powerful Robot Vacuum
- Select and Go – choose rooms to clean
- Point Cleaning- Use remote to order spot clean
- Combo Brush - wide brush head covers large area


**POWERbot VR2AJ9250WW
OP6443**

- 50X More Powerful
- Point Cleaning – Use remote to order spot clean
- Combo Brush- wide brush head covers large area.


**POWERbot VR2AM7070W
OP6445**

- 40X More Powerful
- Self Clean Brush
- Low Profile


**POWERbot VR2AM7090WD
OP6444**

- 40X More Powerful
- Point Cleaning
- Self Clean Brush removes tangled hair from brush
- Low Profile 3.8" tall goes under more furniture

Due to Samsung's commitment to improvement in features, technology and specifications appliances are subject to change without notice. In such cases Samsung reserves the right to substitute appliances of greater or equal value.



Wifi Enabled



Family Owned & Operated

In a culture of corporate ownership, it's comforting to know your builder deals with a 40 year old company owned and operated by a family with American traditions and values. This means your builder has direct access every day to owners and decision makers who will build the main component of your new home. Ask yourself, does that make Rochester Homes a better manufacturer for your new home project? Rochester Homes is a company big enough to do the job but small enough for personal care.

In April of 1972, Milam Anderson turned the first shovel of dirt to create Rochester Homes. Since that time Rochester Homes has been building quality homes with innovative designs. Our company has been owned and managed by family ever since. Our customers take comfort in knowing Rochester Homes is entering its third generation to lead it into the next 40 years of building a particular home for particular people.



P.O. BOX 587 | ROCHESTER, INDIANA 46975
TOLL-FREE: 800.860.4554
LOCAL: 574.223.4321
FAX: 574.223.1655